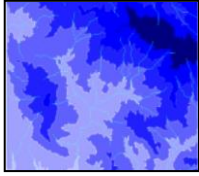


Dominick Burnham

Environmental/GIS Analyst

dburnham@watershedenvironmental.com



Watershed Environmental, Inc.

3324 State Street, Suite B

Santa Barbara, CA 93105

Phone: 805-876-5004 | Fax: (805) 456-3987

www.WatershedEnvironmental.com

EDUCATION

2015: BA (honors) in Geography, GIS Emphasis
University of California at Santa Barbara

RECENT PROJECT EXPERIENCE

Watershed Environmental, Inc.

April 2017–

GIS Analysis and Cartography

- *Reclamation Project*, vegetation and land cover mapping, Lompoc Stone Mining and Vesting, Lompoc, CA
- *Biological Assessment*, GIS impact analysis and report figures, Bloodlines Winery, Lompoc, CA
- *Biological Assessment*, GIS impact analysis and report figures, DS Ranch, Lompoc, CA
- *Riparian Habitat Restoration, Phase 1*, vegetation and land cover mapping, Westmont College, Santa Barbara, CA
- *Biological Assessment*, vegetation and land cover mapping, Hollister Ranch Parcel 18, Santa Barbara County, CA
- *Habitat Restoration/Revegetation*, figures for status reports, Lagunitas Mixed-Use Development Project, Santa Barbara, CA
- *Tree Inventory, Assessment, and Protection Plan*, vegetation and land cover mapping, private residence, Santa Barbara, CA
- *Biological Assessment*, report figures, maps, and geospatial data, Rancho Monte Allegre, Santa Barbara County, CA

Biological Assessment and Environmental Monitoring

- *Habitat Restoration Plan*, oversight management, The Village at Los Carneros, Santa Barbara, CA
- *Biological Assessment*, assist with field surveys and create figures, private residence, Santa Barbara, CA

Habitat Restoration Implementation

- *Open Space Management Plan*, assist with plan implementation, Casa Dorinda Retirement Community, Santa Barbara, CA

Project Permitting

- *Biological Consulting contract*, permit application assistance, Beach City Apartments, Santa Barbara, CA

Ventura Water Department

Engineering Aide. August 2015—April 2017

- Developed water and sewer pipeline Atlas and hydraulic model in ArcGIS for engineers
- Interpreted as-builts and aerial imagery for data feature extraction in GIS, as well as field verification
- Generated maps/reports in emergency situations, for informing the public or for analysis by engineers
- Water Will Serve interpretation and parcel history research
- Integral member of GIS team coordinating with GIS leads on methodology and project outline